

R O W A N



Arak

By Martin Storey





Arak

by Martin Storey



SIZES

S	M	L	XL	XXL	
To fit bust					
81-86	91-97	102-107	112-117	122-127	cm
32-34	36-38	40-42	44-46	48-50	in

length:

46	48	50	52	54	cm
18	19	19½	20½	21½	in

width:

45	50	56	61.5	69.5	cm
17½	19½	22	24	27½	in

sleeve seam:

10 cm
4 in

YARN

Felted Tweed

A Avocado 161					
3	3	3	4	4	x 50gm
B Damask 182					
2	2	3	3	3	x 50gm
C Ginger 154					
1	2	2	2	2	x 50gm
D Paisley 171					
1	1	2	2	2	x 50gm

NEEDLES

1 pair 2¾mm (no 12) (US 2) needles
1 pair 3¼mm (no 10) (US 3) needles

BUTTONS - 6 x small buttons

TENSION

29 sts and 30 rows to 10 cm measured over patterned st st using 3¼mm (US 3) needles.

BACK

Using 2¾mm (US 2) needles and yarn B cast on 131 [145: 163: 179: 201] sts.

Work in g st for 2 rows, ending with RS facing for next row. Change 3¼mm (US 3) needles.

Beg and ending rows as indicated, using the **fairisle** technique as described on the information page and repeating the 78 row patt repeat throughout, cont in patt from chart, which is worked entirely in st st beg with a K row, as folls:

Work 72 [76: 78: 82: 84] rows, ending after chart row 72 [76: 78: 4: 6] and with RS facing for next row. (Back should meas approx 24.5 [25.5: 26.5: 27.5: 28.5] cm.)

Shape armholes

Keeping patt correct, cast off 6 [7: 9: 10: 12] sts at beg of next 2 rows. 119 [131: 145: 159: 177] sts.

Dec 1 st at each end of next 7 [7: 9: 11: 13] rows, then on foll 5 [8: 8: 9: 11] alt rows. 95 [101: 111: 119: 129] sts.

Cont straight until armhole meas 19.5 [20.5: 21.5: 22.5: 23.5] cm, ending with RS facing for next row.

Shape back neck

Next row (RS): Patt 22 [25: 29: 33: 37] sts and turn, leaving rem sts on a holder.

Work each side of neck separately.

Dec 1 st at neck edge of next row, ending with RS facing for next row. 21 [24: 28: 32: 36] sts.

Shape shoulder

Cast off 6 [7: 8: 10: 11] sts at beg of next and foll alt row **and at same time** dec 1 st at neck edge of next 3 rows.

Work 1 row.

Cast off rem 6 [7: 9: 9: 11] sts.

With RS facing, slip centre 51 [51: 53: 53: 55] sts onto a holder, rejoin yarns and patt to end.

Complete to match first side, reversing shapings.

LEFT FRONT

Using 2¾mm (US 2) needles and yarn B cast on 61 [68: 77: 85: 96] sts.

Work in g st for 2 rows, ending with RS facing for next row.

Change to 3¼mm (US 3) needles.

Beg and ending rows as indicated, cont in patt from chart as folls:

Work 72 [76: 78: 82: 84] rows, ending after chart row 72 [76: 78: 4: 6] and with RS facing for next row.

Shape armhole

Keeping patt correct, cast off 6 [7: 9: 10: 12] sts at beg of next row. 55 [61: 68: 75: 84] sts.

Work 1 row.

Dec 1 st at armhole edge of next 7 [7: 9: 11: 13] rows, then on foll 5 [8: 8: 9: 11] alt rows. 43 [46: 51: 55: 60] sts.

Cont straight until 24 [24: 26: 26: 28] rows less have been worked than on back to beg of shoulder shapings, ending with RS facing for next row.

Shape front neck

Next row (RS): Patt 30 [33: 38: 42: 47] sts and turn, leaving rem 13 sts on a holder.

Keeping patt correct, dec 1 st at neck edge of next 8 rows, then on foll 2 [2: 3: 3: 4] alt rows, then on 2 foll 4th rows.

18 [21: 25: 29: 33] sts.

Work 3 rows, ending with RS facing for next row.

Shape shoulder

Cast off 6 [7: 8: 10: 11] sts at beg of next and foll alt row.

Work 1 row.

Cast off rem 6 [7: 9: 9: 11] sts.

RIGHT FRONT

Work to match left front, reversing shapings and working first row of neck shapings as folls:

Shape front neck

Next row (RS): Patt 13 sts and slip these sts onto a holder, patt to end. 30 [33: 38: 42: 47] sts.

SLEEVES

Using 2¾mm (US 2) needles and yarn B cast on 79 [83: 89: 93: 99] sts.

Work in g st for 2 rows, ending with RS facing for next row.

Change to 3¼mm (US 3) needles.

Beg and ending rows as indicated and beg with chart row 43 [47: 49: 53: 55], cont in patt from chart as folls:

Inc 1 st at each end of next and foll 12 alt rows, taking inc sts into patt. 105 [109: 115: 119: 125] sts.

Work 3 rows, ending after chart row 72 [76: 78: 4: 6] and with RS facing for next row. (Sleeve should meas approx 10 cm.)

Shape top

Keeping patt correct, cast off 6 [7: 9: 10: 12] sts at beg of next 2 rows. 93 [95: 97: 99: 101] sts. (**Note:** Sleeve top shapings is NOT shown on chart.)

Dec 1 st at each end of next 7 rows, then on every foll alt row until 63 sts rem, then on foll 15 rows, ending with RS facing for next row. 33 sts.

Cast off 4 sts at beg of next 4 rows.

Cast off rem 17 sts.

MAKING UP

Press.

Join both shoulder seams using back stitch, or mattress stitch if preferred.

Neckband

With RS facing, using 2¾mm (US 2) needles and yarn B, slip 13 sts from right front holder onto right needle, rejoin yarn and pick up and knit 24 [24: 26: 26: 28] sts up right side of front neck, and 5 sts down right side of back neck, K across 51 [51: 53: 53: 55] sts on back holder, pick up and knit 5 sts up left side of back neck, and 24 [24: 26: 26: 28] sts down left side of front neck, then K across 13 sts on left front holder. 135 [135: 141: 141: 147] sts.

Cont in g st until neckband meas 3.5 cm from pick-up row, ending with **WS** facing for next row.

Cast off knitwise (on **WS**).

Button band

With RS facing, using 2¾mm (US 2) needles and yarn B, beg at top of neckband, pick up and knit 107 [107: 112: 117: 122] sts evenly down left front opening edge to cast-on edge. Cont in g st until button band meas 3.5 cm from pick-up row, ending with **WS** facing for next row.

Cast off knitwise (on **WS**).

Buttonhole band

With RS facing, using 2¾mm (US 2) needles and yarn B, beg at cast-on edge, pick up and knit 107 [107: 112: 117: 122] sts evenly up right front opening edge to top of neckband.

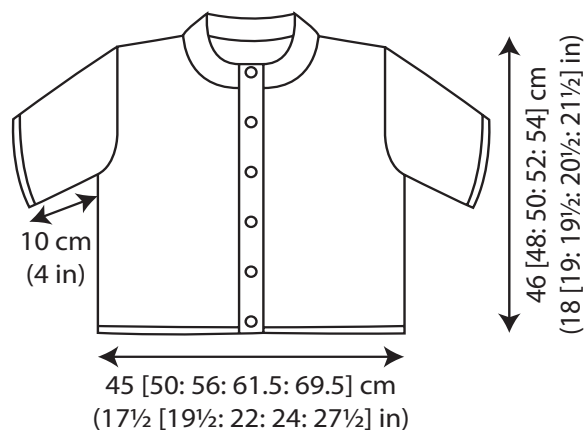
Cont in g st until buttonhole band meas 1.5 cm from pick-up row, ending with RS facing for next row.

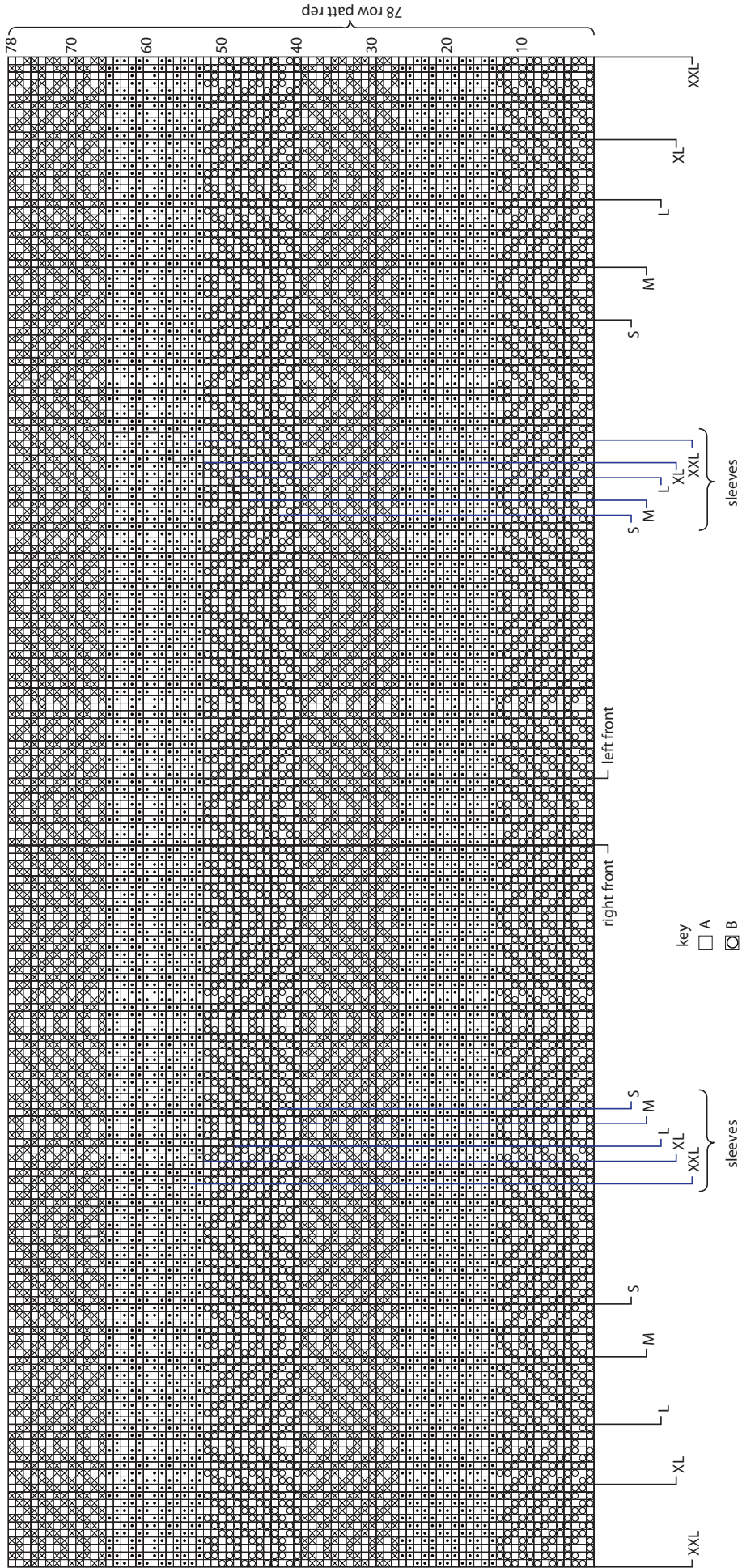
Next row (RS): K3, *yfwd, K2tog (to make a buttonhole), K18 [18: 19: 20: 21], rep from * 4 times more, yfwd, K2tog (to make 6th buttonhole), K2.

Cont in g st until buttonhole band meas 3.5 cm from pick-up row, ending with **WS** facing for next row.

Cast off knitwise (on **WS**).

Set in sleeves using the set-in method.





All right reserved. Reproduction in whole or any part of all material, including illustrations, in this publication is strictly forbidden. No part may be reproduced, stored in a retrieval system, or transmitted in any form or by any means electronic, electrostatic, magnetic tape, mechanical, photocopying, recording or otherwise without prior permission of the copyright owners having been given in writing.

The designs in this publication are copyrighted and must not be knitted for re-sale. Reproduction of this publication is protected by copyright and is sold on the condition that it is used for non commercial purposes. Yarn quantities are approximate as they are based on average requirements. Please note images are for guidance only. Colours may not display accurately on screen or in printed format. Contact your local stockist to view a fringed (not digital reproduction) yarn shade card.

